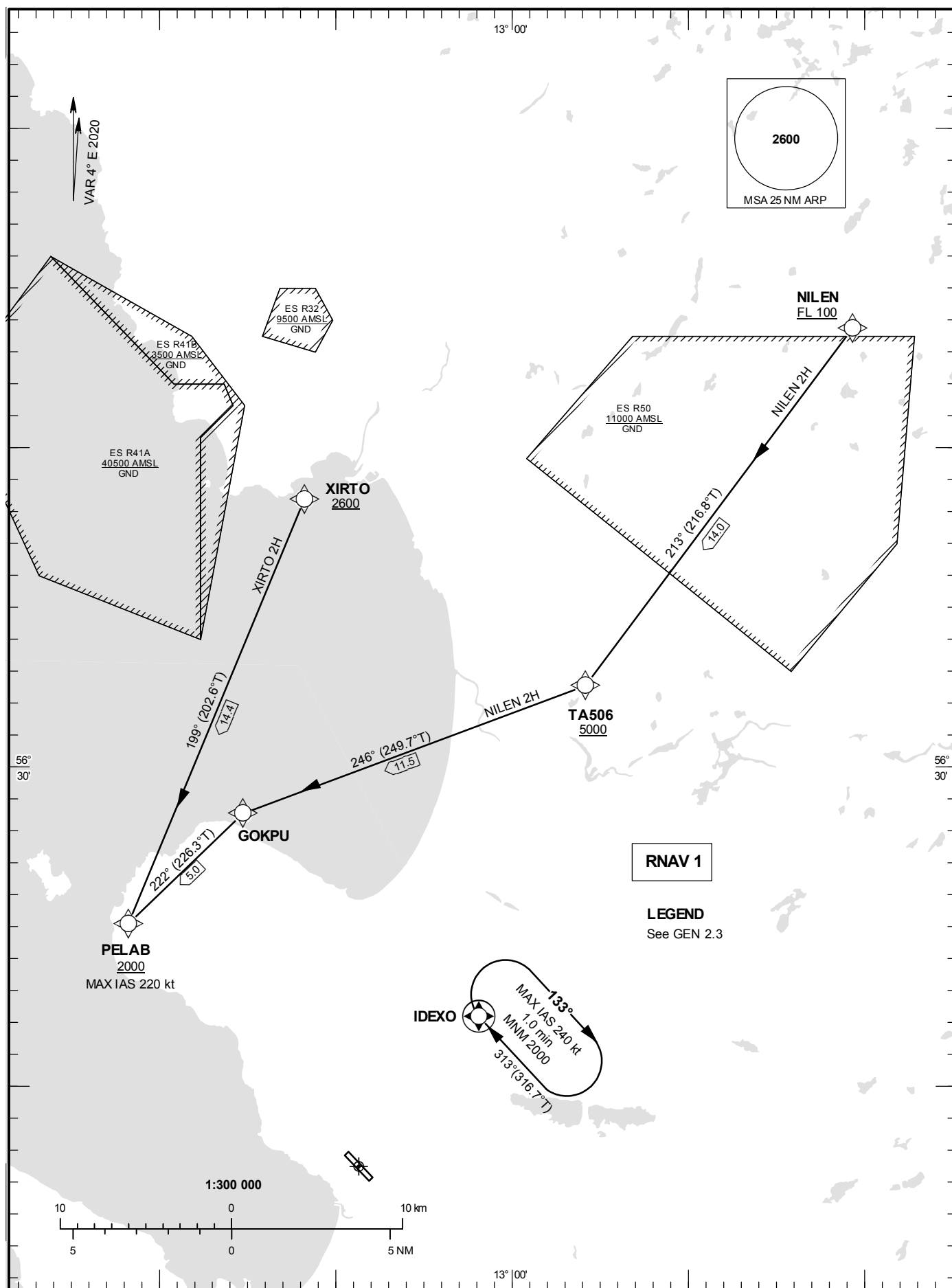


**STANDARD INSTRUMENT
ARRIVAL CHART (STAR) -
ICAO**

HGT and ALT in ft
BRG are MAG (True)
TA 5000 ft AMSL

ÄNGELHOLM TOWER	127.105
ÄNGELHOLM APPROACH	132.455

RNAV (GNSS) STAR RWY 14



CHANGE: Editorial

Prescribed Coding of RNAV (GNSS) STAR RWY 14

NILEN 2H

Path Term	Waypoint Identifier	Fly-over	Course °M(°T)	Dist (NM)	Turn Dir	Altitude (ft)	Speed Limits (kt)	VPA/RDH (°/ft)	Rec Navaid	Navigation Specification
IF	NILEN	-	-	-	-	+FL100	-	-	-	RNAV 1
TF	TA506	-	213° (216.8°)	14.0	-	+5000	-	-	-	RNAV 1
TF	GOKPU	-	246° (249.7°)	11.5	-	-	-	-	-	RNAV 1
TF	PELAB	-	222° (226.3°)	5.0	-	+2000	-220	-	-	RNAV 1

STAR instruction: NILEN (FL100 or above) – TA506 (5000 ft or above) – GOKPU – PELAB (Max IAS 220 kt, 2000 ft or above)

XIRTO 2H

Path Term	Waypoint Identifier	Fly-over	Course °M(°T)	Dist (NM)	Turn Dir	Altitude (ft)	Speed Limits (kt)	VPA/RDH (°/ft)	Rec Navaid	Navigation Specification
IF	XIRTO	-	-	-	-	+2600	-	-	-	RNAV 1
TF	PELAB	-	199° (202.6°)	14.4	-	+2000	-220	-	-	RNAV 1

STAR instruction: XIRTO (2600 ft or above) – PELAB (Max IAS 220 kt, 2000 ft or above)